



 paulwallace

Village Close, Hoddesdon, EN11 0GN |
£209,995 | Leasehold

Village Close, Hoddesdon, EN11 0GN

This modern two-bedroom ground floor apartment features a well-appointed kitchen, a family bathroom, and a generously sized living/dining room. Boasting gas central heating, double glazed windows, and an allocated parking space located conveniently adjacent to the apartment, this property offers comfort, convenience, and an ideal location for commuters. Perfectly situated within walking distance of Rye House railway station, this property provides easy access to London Liverpool Street, Tottenham Hale, and Stratford. Additionally, the property is currently occupied by excellent long-term tenants, presenting an attractive opportunity for landlords or investors. With 101 years remaining on the lease, this leasehold property is available chain free to potential buyers. Don't miss the chance to own this contemporary and well-connected apartment in a highly sought-after area.

Key features

- Ground floor apartment with modern finish
- Well-appointed kitchen and family bathroom
- Gas central heating and double glazed windows
- Walking distance to Rye House train station
- Two generously sized bedrooms
- Spacious living/dining room
- Allocated parking space directly adjacent to the apartment
- Leasehold with 101 years remaining

Property Information

Tenure

Leasehold

Council Tax

C

EPC Rating

C



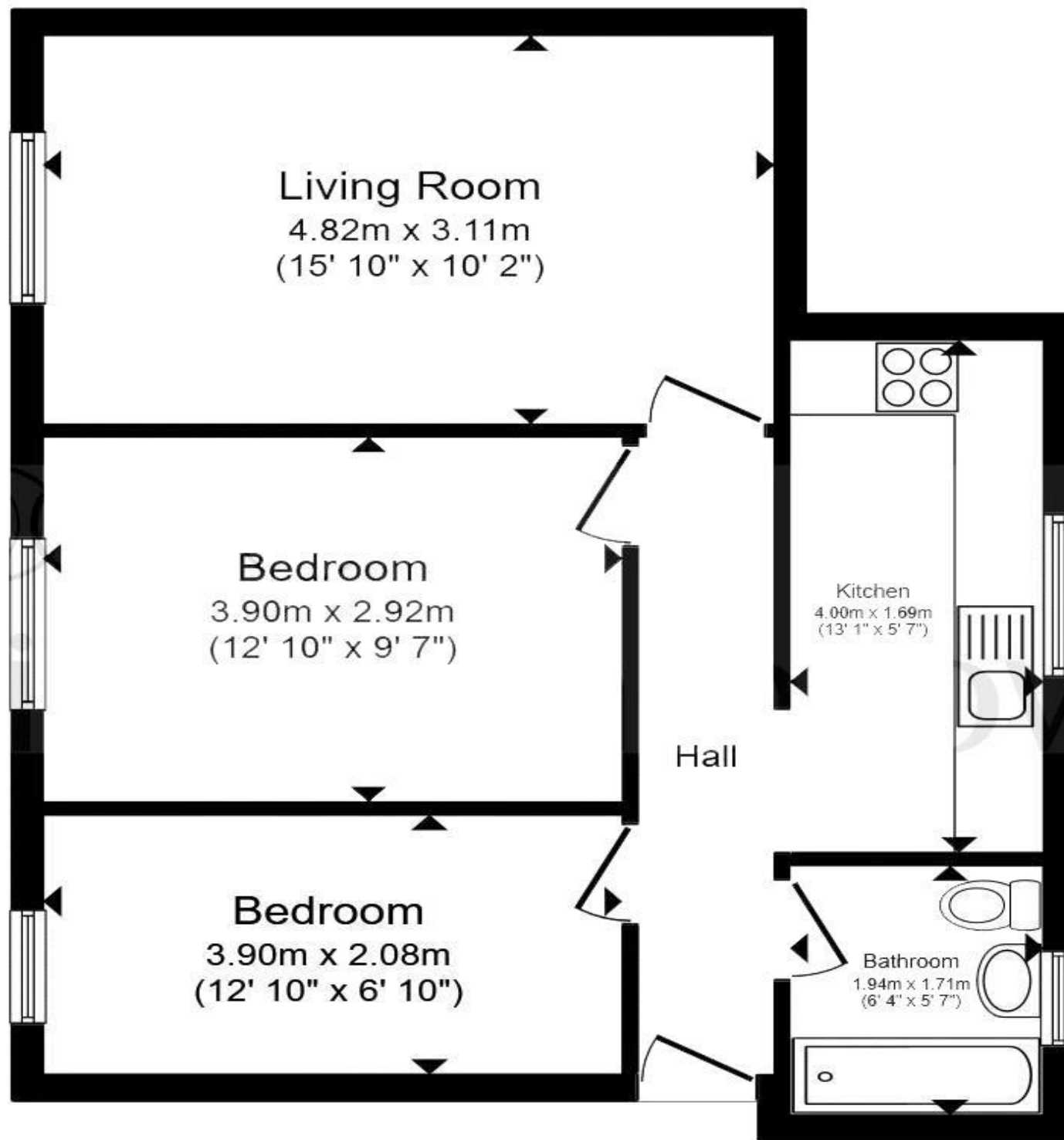
 paulwallace
estate agents

hoddesdon@paulwallace.co.uk

01992 466471







Registered Address: Unit 3 The Brookfield Centre, Cheshunt, Herts, EN8 0NN Company Registration Number: OC414280 | VAT Number: 276958046©2022 Paul Wallace Group LLP trading as Paul Wallace Estate Agents




Paul Wallace Estate Agents

70 High Street
Hoddesdon
Hertfordshire
EN11 8ET

 01992 466471

 hoddesdon@paulwallace.co.uk

 www.paulwallace.co.uk



Opening Times

Mon	9am to 6.30pm
Tues	9am to 6.30pm
Wed	9am to 6.30pm
Thurs	9am to 6.30pm
Fri	9am to 6.30pm
Sat	9am to 5.00pm
Sun	Closed



Agents Note: Whilst every care has been taken to prepare these sales particulars, they are for guidance purposes only. All measurements are approximate and are for general guidance purposes only and whilst every care has been taken to ensure their accuracy, they should not be relied upon. Potential buyers are advised to recheck the measurements.